



# Minnesota Ag News – Crop Weather

USDA, NASS, Minnesota Field Office  
P.O. Box 7068 – St. Paul, MN 55107  
(651) 296-2230 · (651) 296-3192 FAX

Email: [nass-mn@nass.usda.gov](mailto:nass-mn@nass.usda.gov) - Homepage: <http://www.nass.usda.gov>

Released: September 14, 2009

Issue No: CW-37-09

COOPERATING WITH THE MN DEPARTMENT OF AGRICULTURE, NATIONAL WEATHER SERVICE - CHANHASSEN, MN

UNIV. OF MINN. EXTENSION SERVICE, DNR STATE CLIMATOLOGY OFFICE, USDA-FSA, USDA-NRCS, and Local FACs

## ABOVE NORMAL TEMPERATURES BENEFIT MATURING CROPS

Maturing field crops made significant progress last week as average temperatures were 4 to 10° above normal across the state, according to the USDA, NASS, Minnesota Field Office. Sixty-four percent of soybeans were turning yellow, a 33 percentage-point increase over last week. Sixteen percent of soybeans were dropping leaves, up 15 points from last week and identical to last year's pace. Fifty-six percent of corn was at or beyond the dent stage, 26 points higher than a week ago, but 22 points behind last year and 26 points behind average. Statewide, 72 percent of corn and 68 percent of soybeans were rated in good to excellent condition, both unchanged from a week ago.

Last week's daytime highs ranged from the low 70s to low 80s while nighttime lows were generally in the low 50s to low 60s. Widespread showers and thunderstorms affected parts of central and northwest Minnesota on Tuesday and Friday with rainfall totals generally between 0.25 and 1.50 inches. Little to no rainfall was received across the south. Topsoil moisture supplies were 66 percent adequate to surplus, down from 73 percent last week.

Last week's rains slowed small grain harvest. Spring wheat harvested advanced 7 percentage-points last week compared to a 33 point gain in the previous reporting period. Barley harvested advanced 8 points compared to a 31 point gain in the previous reporting period. Statewide, barley was 78 percent harvested and spring wheat was 68 percent harvested.

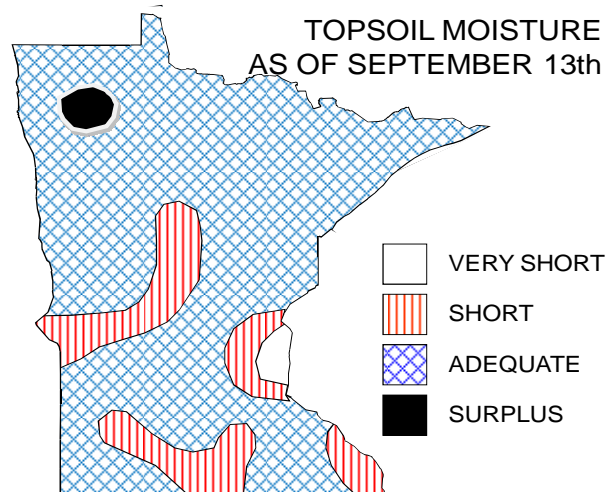
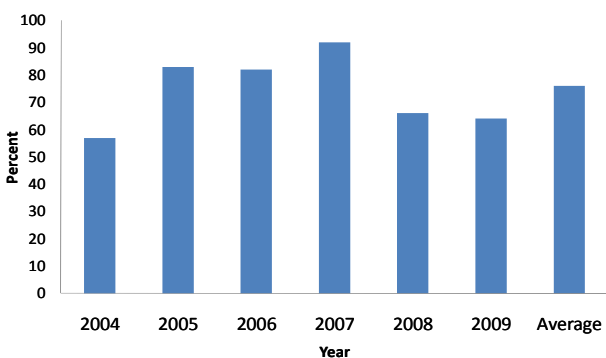
Sugarbeet harvest was 4 percent complete with 69 percent of the crop in good to excellent condition. Potatoes were 25 percent harvested by week's end. Sweet corn harvest advanced to 78 percent complete. Other crops being harvested included dry beans at 10 percent and canola at 26 percent complete.

Days Suitable for Fieldwork: 5.7				
	Very Short	Short	Adequate	Surplus
	----- Percent -----			
Topsoil Moisture	6	28	61	5

Crop Progress as of September 13, 2009					
Crop	Stage of Development	This Week	Last Week	Last Year	5 Yr Avg
		----- Percent -----			
Corn	Dough	93	77	97	97
	Dent	56	30	78	82
	Mature	1	0	5	22
Corn Silage	Harvested	21	8	32	46
Soybeans	Turning Yellow	64	31	66	76
	Dropping Leaves	16	1	16	36
Spring Wheat	Harvested	68	61	96	90
Oats	Harvested	93	90	99	99
Barley	Harvested	78	70	98	95
Potatoes	Harvested	25	23	35	43
Canola	Harvested	26	21	59	81
Dry Beans	Harvested	10	5	34	26
Sweet Corn	Harvested	78	61	77	81
Sugarbeets	Harvested	4	3	3	4

Condition as of September 13, 2009					
	Very Poor	Poor	Fair	Good	Exc
	----- Percent -----				
Pasture	7	16	38	37	2
Soybeans	2	6	24	54	14
Corn	2	4	22	54	18
Potatoes	0	1	8	65	26
Canola	0	12	42	35	11
Sunflowers	0	8	35	48	9
Dry Beans	2	6	25	58	9
Sugarbeets	2	5	24	56	13

Soybeans Turning Yellow as of September 13



PRECIPITATION AND TEMPERATURES FOR THE WEEK ENDING September 13, 2009:  
 Temperatures averaged from 5.1 degrees above normal in the Southeast District to 9.6 degrees above normal in the North Central District. Extremes: 42 degrees in International Falls; 93 degrees in Wheaton. Precipitation averaged from 0.79 inch below normal in the Southeast District to 0.94 inch above normal in the Northwest District. Greatest weekly total of 1.84 inches was recorded in Wheaton.

For a map of Minnesota's precipitation, please see the Minnesota Climatology Group's website; <http://climate.umn.edu/doc/weekmap.asp>.

Precipitation and Temperature Summary for 9/7/2009 through 9/13/2009

	Temperature				Precipitation				G D D	
	High	Low	Week Ave	Depart from Norm	Week Total	Depart Past Week	From Four Weeks	Since 4/1	Since May 4	Depart from Norm
<u>NW DIST 1</u>										
Crookston	83	53	66.6	7.5	1.62	1.08	.08	2.34	1766	-322
Moorhead	84	49	67.0	6.9	1.32	.80	-.62	-4.54	1983	-204
Warroad	80	51	65.8	9.6	1.57	.93	-.08	2.07	1461	-359
<u>NC DIST 2</u>										
Grand Rapids	82	53	67.4	10.7	0	-.73	-2.40	-4.21	1709	-115
Intl. Falls	79	42	63.4	8.3	.83	.08	-1.29	-3.24	1441	-265
Itasca	81	45	66.7	11.4	.92	.20	-1.25	-4.08	1613	-98
<u>NE DIST 3</u>										
Duluth	80	54	66.8	10.3	1.08	.05	1.31	-4.85	1513	-96
Grand Marais	69	53	61.4	4.5	.11	-.70	-1.37	-3.36	1017	-227
Hibbing	80	46	64.2	8.7	.40	-.36	-.72	-5.31	1523	-139
<u>WC DIST 4</u>										
Alexandria	81	54	67.6	7.7	.86	.20	-1.16	-8.22	1958	-136
Browns Valley	83	53	68.0	6.2	1.53	1.08	-.16	-1.23	1919	-395
Canby	83	54	69.7	6.2	.11	-.46	-.80	-6.62	2153	-276
Dalton	83	57	69.0	8.0	1.15	.62	-.76	-2.30	1960	-201
Montevideo	83	51	68.2	6.0	.17	-.38	-.66	-4.97	2021	-286
Morris	82	51	67.3	6.2	1.65	1.14	.09	-7.18	1946	-297
<u>CENT DIST 5</u>										
Becker	83	52	69.3	9.5	0	-.79	-.85	-5.54	2112	-7
Hutchinson	82	53	69.4	7.3	1.35	.76	-.56	-5.11	2180	-145
Melrose	80	46	64.7	3.8	.73	.06	-.92	-3.02	1849	-376
Olivia	82	51	67.6	6.5	1.41	.73	-.01	-3.15	1993	-269
St. Cloud	83	48	68.8	9.4	.01	-.72	-1.67	-3.99	1978	-87
Staples	82	52	67.8	9.9	.20	-.41	-1.46	-3.10	1833	-38
Willmar	82	53	68.6	7.2	.02	-.67	-1.50	-3.66	2117	-142
<u>EC DIST 6</u>										
Aitkin	81	51	66.0	8.9	.23	-.48	-1.73	-3.04	1700	-67
Forest Lake	85	55	71.4	10.3	.03	-.79	-.63	-7.86	2141	-70
Hinckley	79	48	65.6	8.2	0	-.80	2.91	-1.83	1629	-223
MSP Airport	83	58	71.8	8.8	.01	-.66	-.50	-5.73	2379	-37
St. Paul - UofM	82	56	70.0	5.9	0	-.79	-.68	-9.18	2230	-254
<u>SW DIST 6</u>										
Lamberton	82	51	68.8	6.6	.51	-.12	-.57	-5.23	2129	-224
Marshall	83	55	70.0	7.0	.40	-.16	-1.09	-5.74	2175	-227
Redwood Falls	83	51	69.8	6.1	1.06	.44	.08	-8.48	2273	-218
Worthington	82	51	67.8	6.7	.28	-.35	-.14	-1.29	2029	-177
<u>SC DIST 8</u>										
Faribault	81	52	68.0	6.3	0	-.81	-1.10	-4.73	2069	-179
Mankato	81	54	68.7	6.3	0	-.77	-.74	-9.97	2061	-285
Waseca	81	53	68.3	6.1	.78	-.02	-1.43	-9.46	2050	-240
Winnebago	82	54	68.3	5.0	0	-.65	-.39	-8.19	2210	-160
<u>SE DIST 9</u>										
Preston	83	44	65.4	3.9	.40	-.50	-2.32	-4.97	1991	-171
Red Wing	84	53	68.9	6.3	0	-.87	.01	-2.85	2091	-241
Rochester	81	51	66.3	5.4	0	-.78	-2.45	-4.22	1957	-177
Rosemount	81	52	67.8	6.1	0	-.87	-1.68	-5.29	2019	-205

Corn growing degree days (GDD) are calculated by subtracting a 50 degree base temperature from the average of the maximum and minimum temperature for the day. The daily maximum is limited to 86 degrees and minimum of 50 degrees.

The MINNESOTA WEEKLY CROP-WEATHER REPORT (USPS-387190) is published weekly in April through November (crop season). Subscription rates are \$15.00 per year for non-reporters and free to survey respondents by the USDA-NASS Minnesota Field Office, P O Box 7068, St. Paul, MN 55107. Periodicals postage paid at St. Paul, Minnesota and other mailing offices. POSTMASTER: Send address changes to the MINNESOTA WEEKLY CROP-WEATHER REPORT, P O Box 7068, St. Paul, MN 55107.

Address Service Requested

Publication No. 387190  
 Minnesota Crop-Weather Report  
 WEEKLY NEWS REPORT

USDA, NASS, Minnesota Field Office  
 PO Box 7068, ST. PAUL, MN 55107

PRESORTED  
 FIRST CLASS MAIL  
 POSTAGE & FEES PAID  
 USDA PERMIT NO G-38