



Minnesota Ag News – Crop Weather

USDA, NASS, Minnesota Field Office
P.O. Box 7068 – St. Paul, MN 55107
(651) 296-2230 · (651) 296-3192 FAX

Email: nass-mn@nass.usda.gov - Homepage: <http://www.nass.usda.gov>

Released: August 31, 2009

Issue No: CW-35-09

COOPERATING WITH THE MN DEPARTMENT OF AGRICULTURE, NATIONAL WEATHER SERVICE - CHANHASSEN, MN

UNIV. OF MINN. EXTENSION SERVICE, DNR STATE CLIMATOLOGY OFFICE, USDA-FSA, USDA-NRCS, and Local FACs

SOYBEANS BEGIN TURNING YELLOW

As of Sunday, two percent of Minnesota's soybean crop was turning yellow, according to the USDA, NASS, Minnesota Field Office. The percentage of soybeans turning yellow was 11 points behind last year and 22 points behind average. Soybean conditions were rated 69 percent good to excellent, unchanged from last week.

Daytime highs, early in the week, were seasonable ranging from the 70s in the north to low 80s in the south. Temperatures turned cooler toward week's end as highs on Saturday and Sunday reached only the mid to upper 60s in most locations. Showers and thunderstorms moved across parts of southern and east central Minnesota on Tuesday. Rainfall amounts were generally an inch or less. Statewide, topsoil moisture supplies were unchanged from last week at 81 percent adequate to surplus.

Fifty-two percent of corn was at or beyond the dough stage, 17 points behind last year and 27 points behind average. Corn at or beyond the dent stage advanced 6 points during the week to 7 percent, 15 points behind last year and 43 points behind average. Statewide, 73 percent of the corn crop was rated in good to excellent condition, unchanged from a week ago.

By Sunday, 28 percent of spring wheat was harvested, 50 points behind last year and average, while barley was 39 percent harvested, 51 points behind last year and 49 points behind average. Oats advanced 17 points during the week to 73 percent harvested.

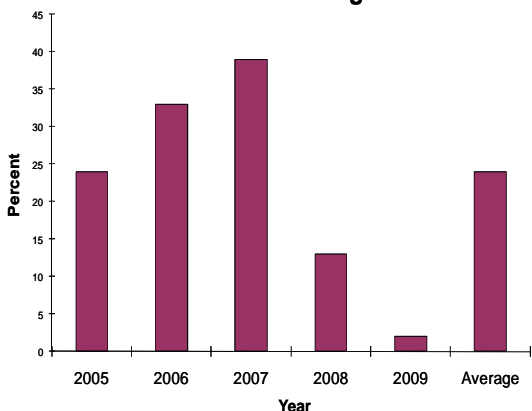
Potatoes were 16 percent harvested by week's end. Sweet corn harvest advanced to 40 percent complete. Other crops being harvested included dry beans at 4 percent and canola at 6 percent complete.

Days Suitable for Fieldwork: 5.5				
	Very Short	Short	Adequate	Surplus
	----- Percent -----			
Topsoil Moisture	2	17	76	5

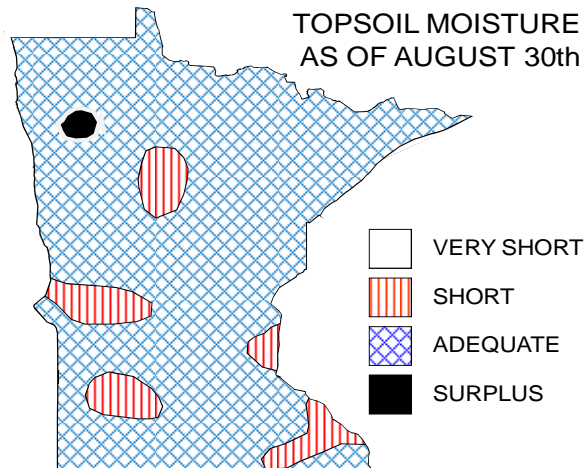
Crop Progress as of August 30, 2009					
Crop	Stage of Development	This Week	Last Week	Last Year	5 Yr Avg
		----- Percent -----			
Corn	Milk	91	81	97	98
	Dough	52	23	69	79
	Dent	7	1	22	50
Corn Silage	Harvested	5	1	10	14
Soybeans	Setting Pods	97	91	99	99
	Turning Yellow	2	0	13	24
Spring Wheat	Turning Ripe	91	80	100	100
	Harvested	28	15	78	78
Oats	Harvested	73	56	91	94
Barley	Turning Ripe	93	83	99	100
	Harvested	39	23	90	88
Potatoes	Harvested	16	12	25	30
Canola	Harvested	6	3	35	60
Dry Beans	Harvested	4	2	3	4
Sweet Corn	Harvested	40	28	51	60

Condition as of August 30, 2009					
	Very Poor	Poor	Fair	Good	Exc
	----- Percent -----				
Pasture	4	11	37	45	3
Spring Wheat	2	5	21	51	21
Barley	2	7	25	49	17
Soybeans	1	6	24	52	17
Corn	1	4	22	54	19
Potatoes	0	1	10	65	24
Canola	0	13	42	35	10
Sunflowers	1	11	34	45	9
Dry Beans	2	5	27	57	9
Sugarbeets	2	3	22	59	14

Soybeans at or beyond Yellowing Stage as of August 30



TOPSOIL MOISTURE AS OF AUGUST 30th



PRECIPITATION AND TEMPERATURES FOR THE WEEK ENDING August 30, 2009:
 Temperatures averaged from 3.7 degrees below normal in the Northeast District to 1.5 degrees below normal in the Central District. Extremes: 32 degrees in International Falls; 87 degrees in Becker. Precipitation averaged from 0.67 inch below normal in the Central District to 0.19 inch below normal in the South Central District. Greatest weekly total of 1.14 inches was recorded in Faribault.

For a map of Minnesota's precipitation, please see the Minnesota Climatology Group's website; <http://climate.umn.edu/doc/weekmap.asp>.

Precipitation and Temperature Summary for 8/24/2009 through 8/30/2009

	Temperature				Precipitation				G D D	
	High	Low	Week Ave	Depart from Norm	Week Total	Depart Past Week	From Four Weeks	From Norm Since 4/1	Since May 4	Depart from Norm
<u>NW DIST 1</u>										
Crookston	81	39	63.6	-1.6	.06	-.57	.50	1.85	1538	-377
Moorhead	82	37	62.4	-3.7	.01	-.54	-.15	-4.81	1742	-260
Warroad	79	40	61.8	-.7	.05	-.59	1.50	1.79	1256	-420
<u>NC DIST 2</u>										
Grand Rapids	79	38	60.2	-2.0	.29	-.49	-.69	-2.73	1489	-189
Intl. Falls	77	32	57.2	-3.7	.07	-.66	-.37	-2.57	1243	-332
Itasca	80	37	60.4	-1.0	.02	-.78	-.62	-3.53	1406	-169
<u>NE DIST 3</u>										
Duluth	76	38	58.5	-2.8	1.00	.01	1.88	-3.86	1302	-166
Grand Marais	78	46	57.5	-3.6	.33	-.40	-1.03	-1.88	881	-220
Hibbing	78	33	56.2	-4.6	.45	-.29	-.03	-4.18	1332	-196
<u>WC DIST 4</u>										
Alexandria	81	43	63.2	-1.9	.02	-.77	.52	-7.69	1737	-177
Browns Valley	85	38	63.2	-4.0	0	-.55	1.76	-1.82	1698	-414
Canby	86	39	63.8	-4.7	.36	-.24	-.53	-5.58	1919	-291
Dalton	79	46	65.2	-.9	.14	-.52	-.16	-2.33	1733	-236
Montevideo	85	41	64.0	-3.2	.16	-.50	1.77	-3.98	1798	-306
Morris	82	39	62.7	-3.7	0	-.65	.51	-7.75	1738	-312
<u>CENT DIST 5</u>										
Becker	87	46	65.4	.5	.15	-.77	1.45	-3.89	1889	-54
Hutchinson	82	44	65.4	-1.4	0	-.83	2.07	-5.16	1951	-175
Melrose	81	41	62.9	-3.3	.09	-.67	1.81	-2.38	1658	-377
Olivia	81	42	63.1	-2.8	0	-.75	2.50	-3.16	1784	-287
St. Cloud	81	41	62.8	-1.7	.25	-.63	1.65	-2.47	1752	-141
Staples	79	37	62.0	-.9	0	-.67	-.17	-2.06	1617	-96
Willmar	82	46	65.4	-.9	.44	-.39	4.43	-2.23	1894	-171
<u>EC DIST 6</u>										
Aitkin	73	36	55.3	-6.7	.12	-.69	-1.77	-1.80	1509	-113
Forest Lake	83	43	65.2	-.8	.48	-.50	1.41	-6.17	1889	-130
Hinckley	78	38	59.9	-2.6	.32	-.57	3.87	-.19	1441	-259
MSP Airport	82	49	66.4	-1.6	.61	-.24	2.34	-4.31	2121	-82
St. Paul - UofM	80	45	65.4	-3.3	.71	-.23	1.54	-7.52	1998	-262
<u>SW DIST 6</u>										
Lamberton	84	41	64.6	-2.2	.14	-.59	.06	-4.45	1905	-246
Marshall	86	41	65.0	-2.9	.41	-.23	-.71	-4.98	1936	-253
Redwood Falls	85	42	64.6	-3.9	.02	-.74	-.45	-8.23	2037	-234
Worthington	82	40	62.4	-3.3	.39	-.37	1.07	-.24	1820	-197
<u>SC DIST 8</u>										
Faribault	78	44	63.2	-3.2	1.14	.18	1.80	-3.04	1861	-191
Mankato	81	45	64.0	-3.3	.81	-.15	-.23	-8.34	1848	-293
Waseca	79	46	64.0	-2.6	.25	-.73	-1.16	-8.56	1837	-252
Winnebago	81	45	64.8	-2.6	.81	-.06	-.52	-6.78	1995	-163
<u>SE DIST 9</u>										
Preston	79	44	63.2	-2.7	.03	-.99	.44	-3.51	1786	-184
Red Wing	82	50	65.6	-1.8	.47	-.42	4.21	-1.09	1866	-260
Rochester	77	43	62.2	-3.3	.08	-.83	-.08	-2.58	1758	-189
Rosemount	80	46	64.4	-1.8	.73	-.27	3.18	-3.47	1811	-217

Corn growing degree days (GDD) are calculated by subtracting a 50 degree base temperature from the average of the maximum and minimum temperature for the day. The daily maximum is limited to 86 degrees and minimum of 50 degrees.

The MINNESOTA WEEKLY CROP-WEATHER REPORT (USPS-387190) is published weekly in April through November (crop season). Subscription rates are \$15.00 per year for non-reporters and free to survey respondents by the USDA-NASS Minnesota Field Office, P O Box 7068, St. Paul, MN 55107. Periodicals postage paid at St. Paul, Minnesota and other mailing offices. POSTMASTER: Send address changes to the MINNESOTA WEEKLY CROP-WEATHER REPORT, P O Box 7068, St. Paul, MN 55107.

WEEKLY NEWS REPORT
 Minnesota Crop-Weather Report
 Publication No. 387190
 Address Service Requested

USDA, NASS, Minnesota Field Office
 PO Box 7068, ST. PAUL, MN 55107

PRESORTED
FIRST CLASS MAIL
POSTAGE & FEES PAID
USDA PERMIT NO G-38